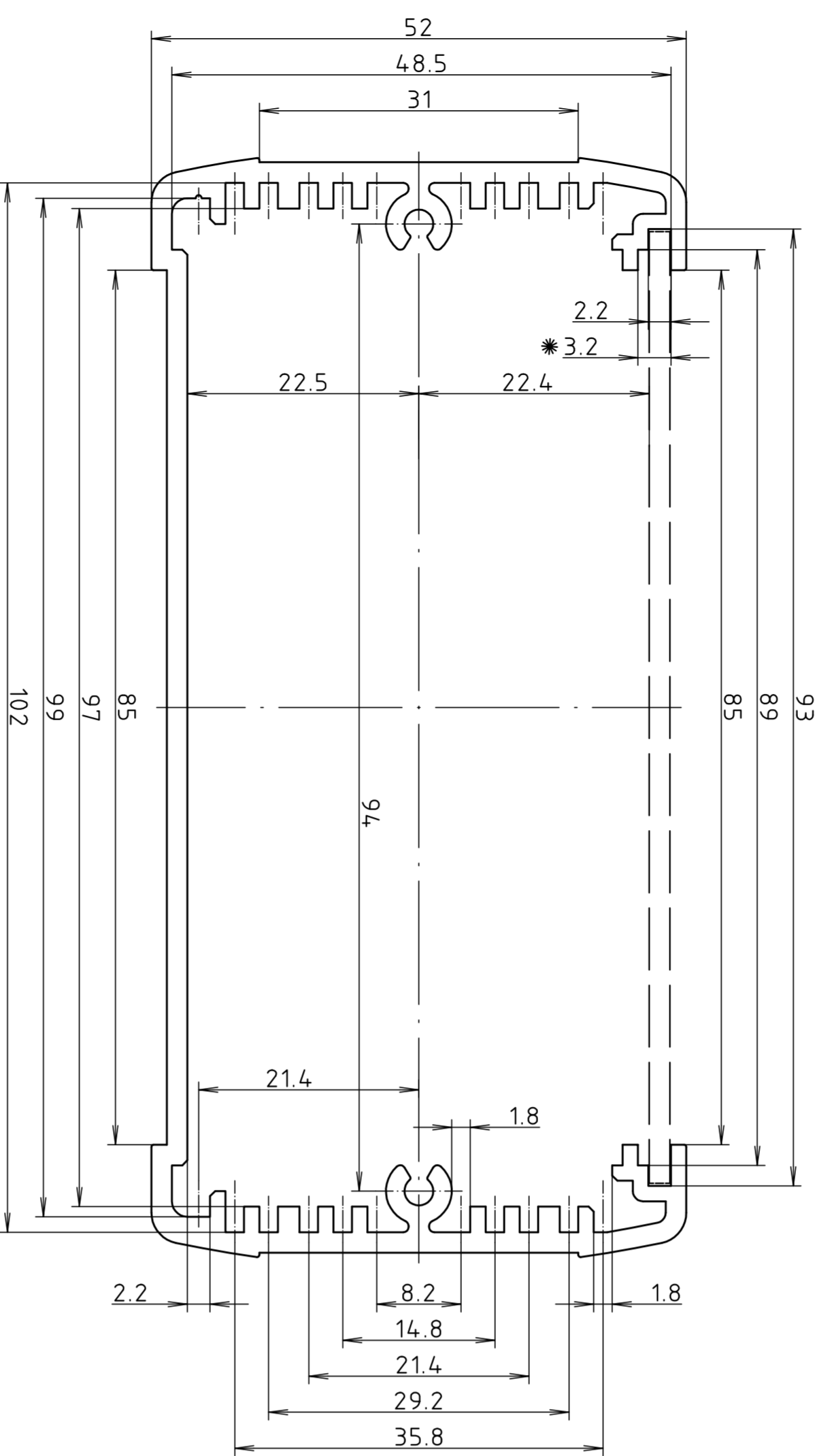
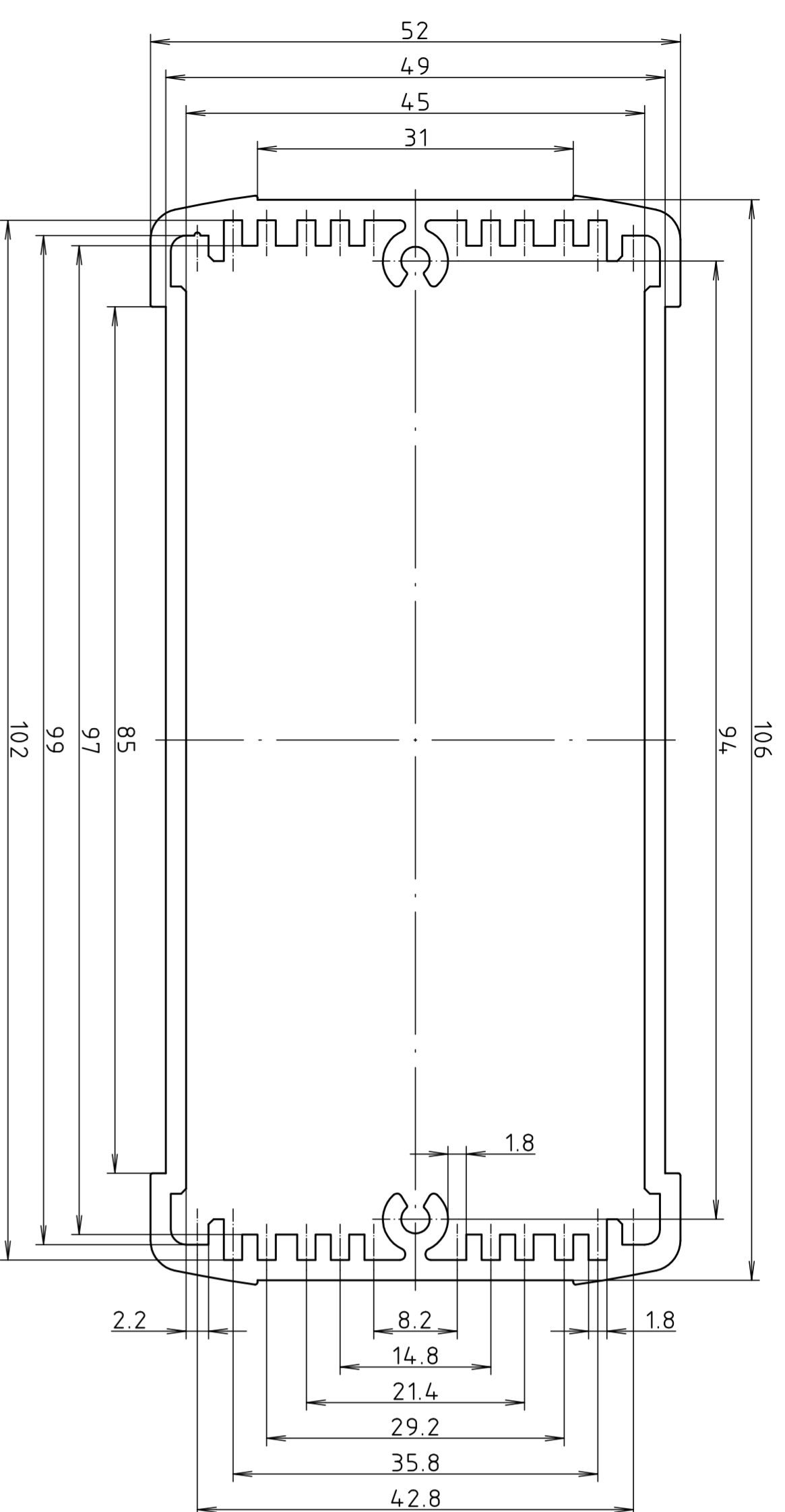


**ELPH 1050**

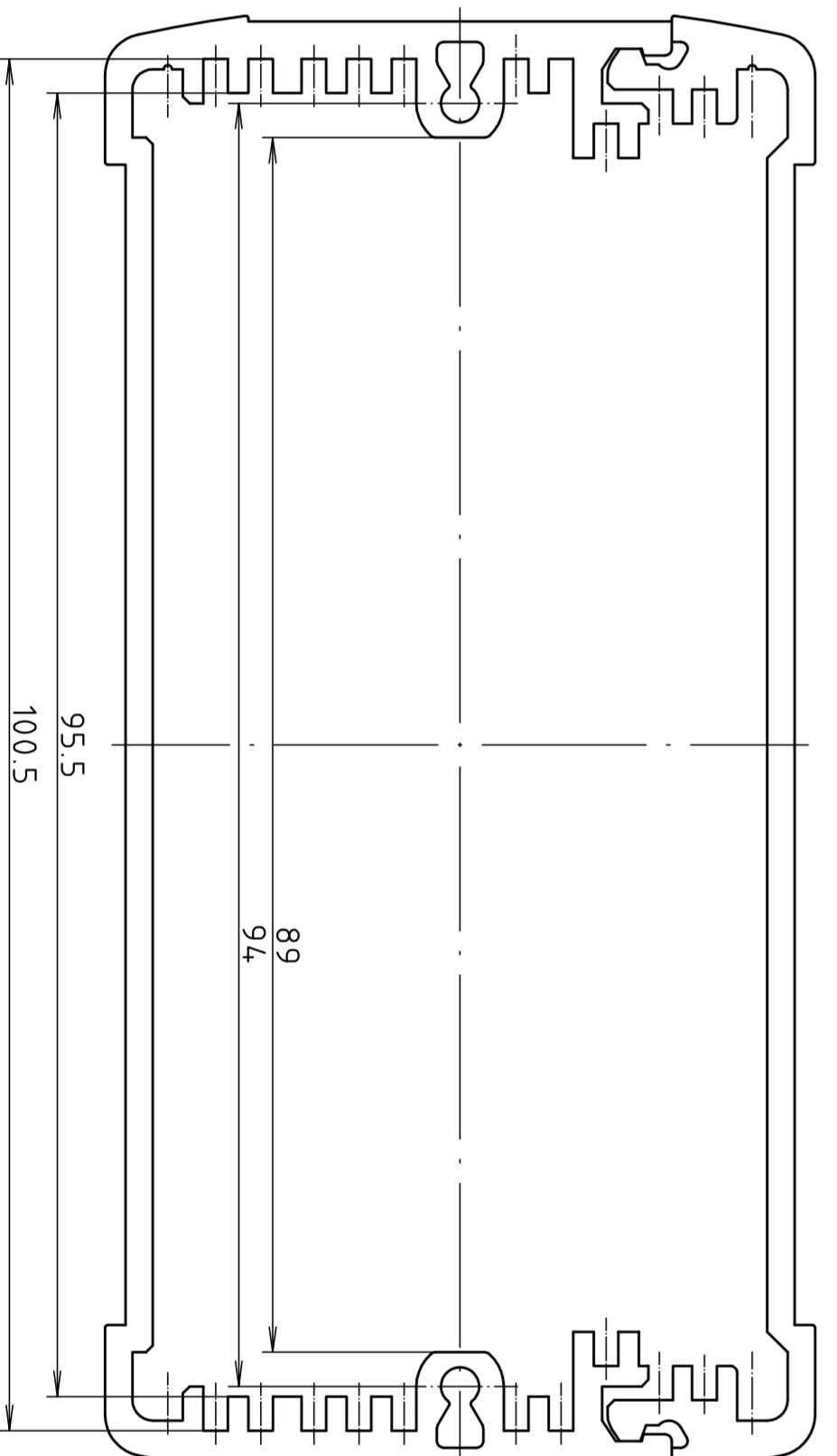


**ELPU 1050**



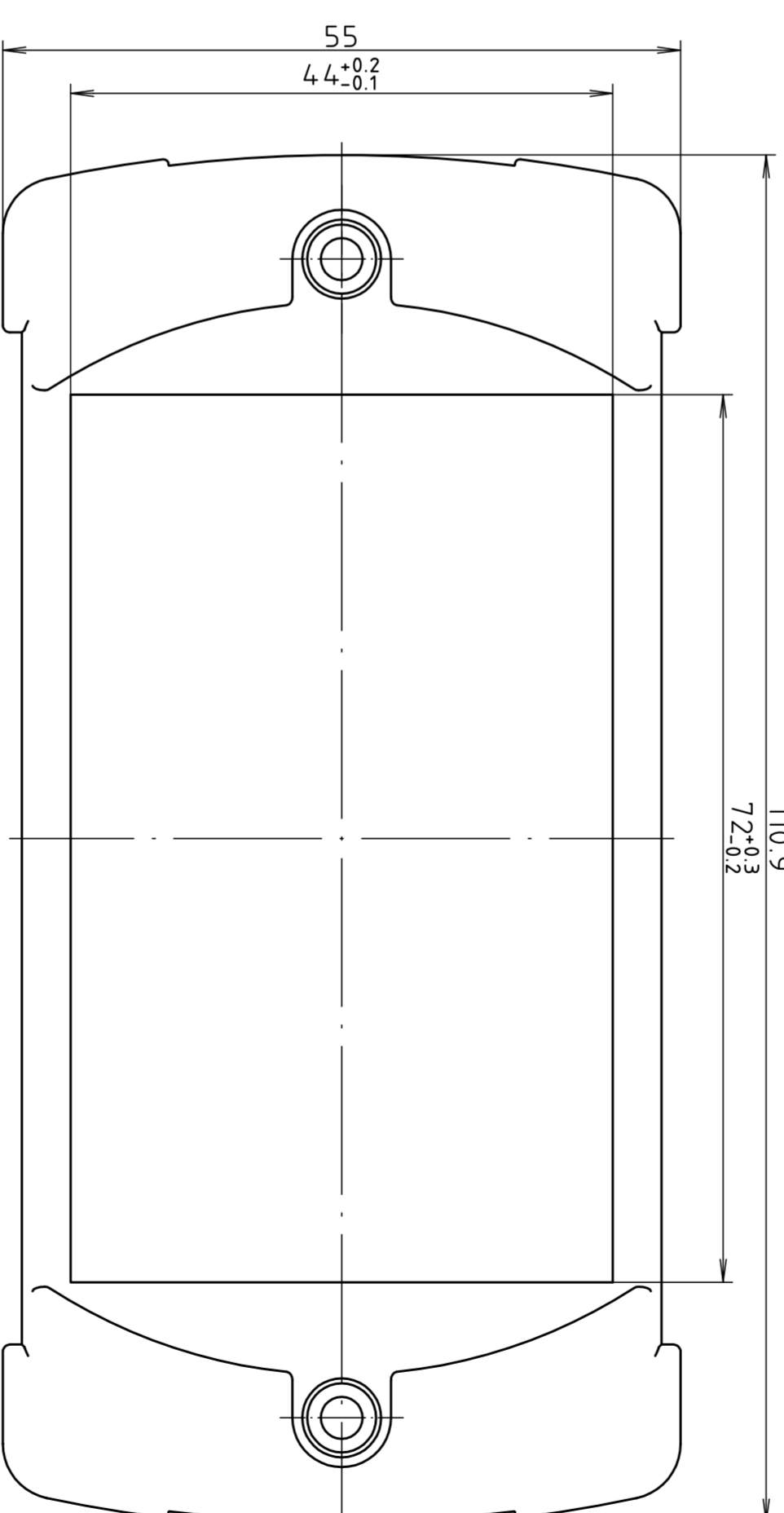
**ELP 1050**

\* In diesen Nuten können "Kombiplatten" wie z.B.:  
2mm Frontplatte und 1mm Folientastatur eingesetzt werden.  
Combination panels can be inserted into these slots,  
e.g. 2mm front panel and 1mm membrane keypad

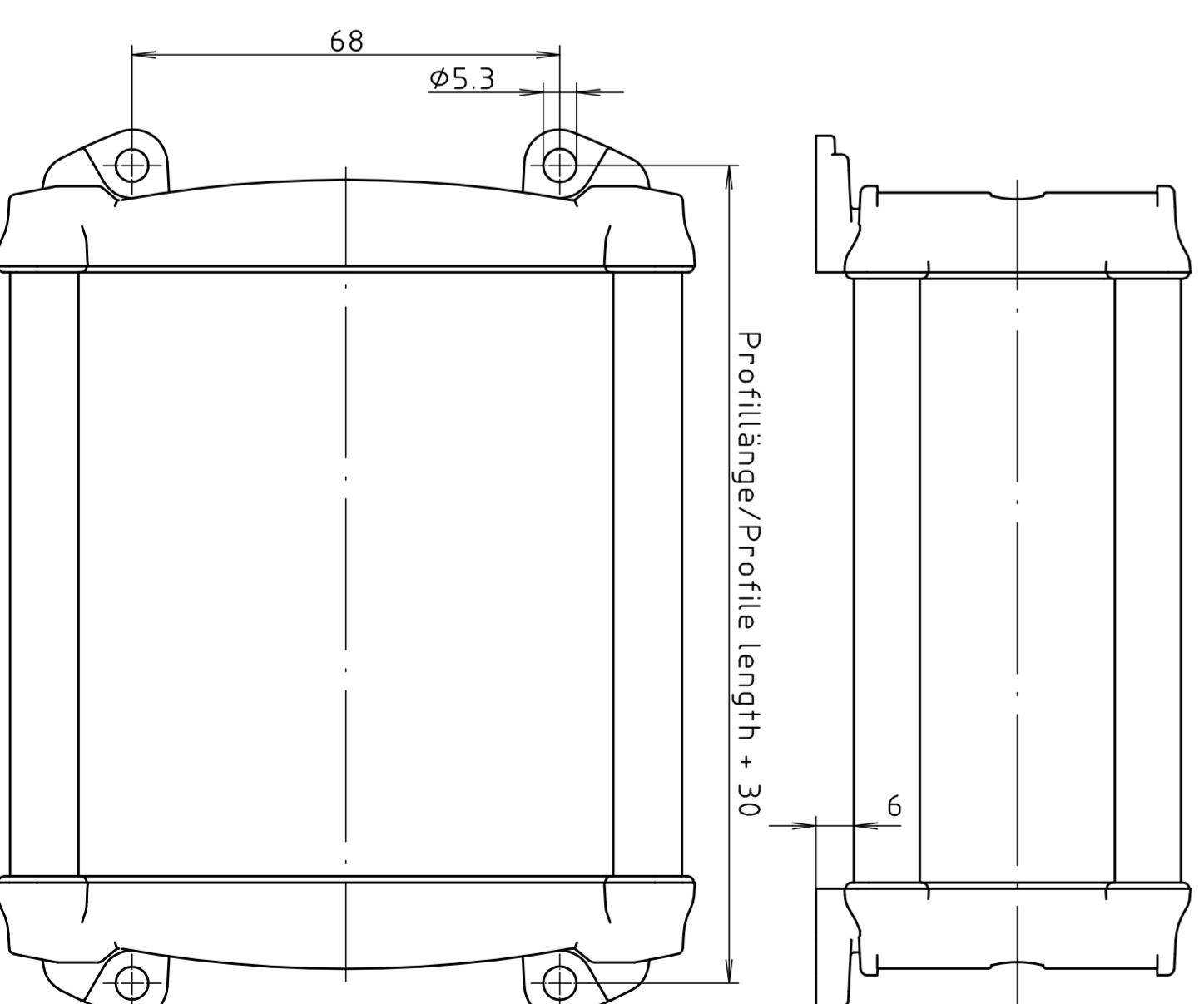
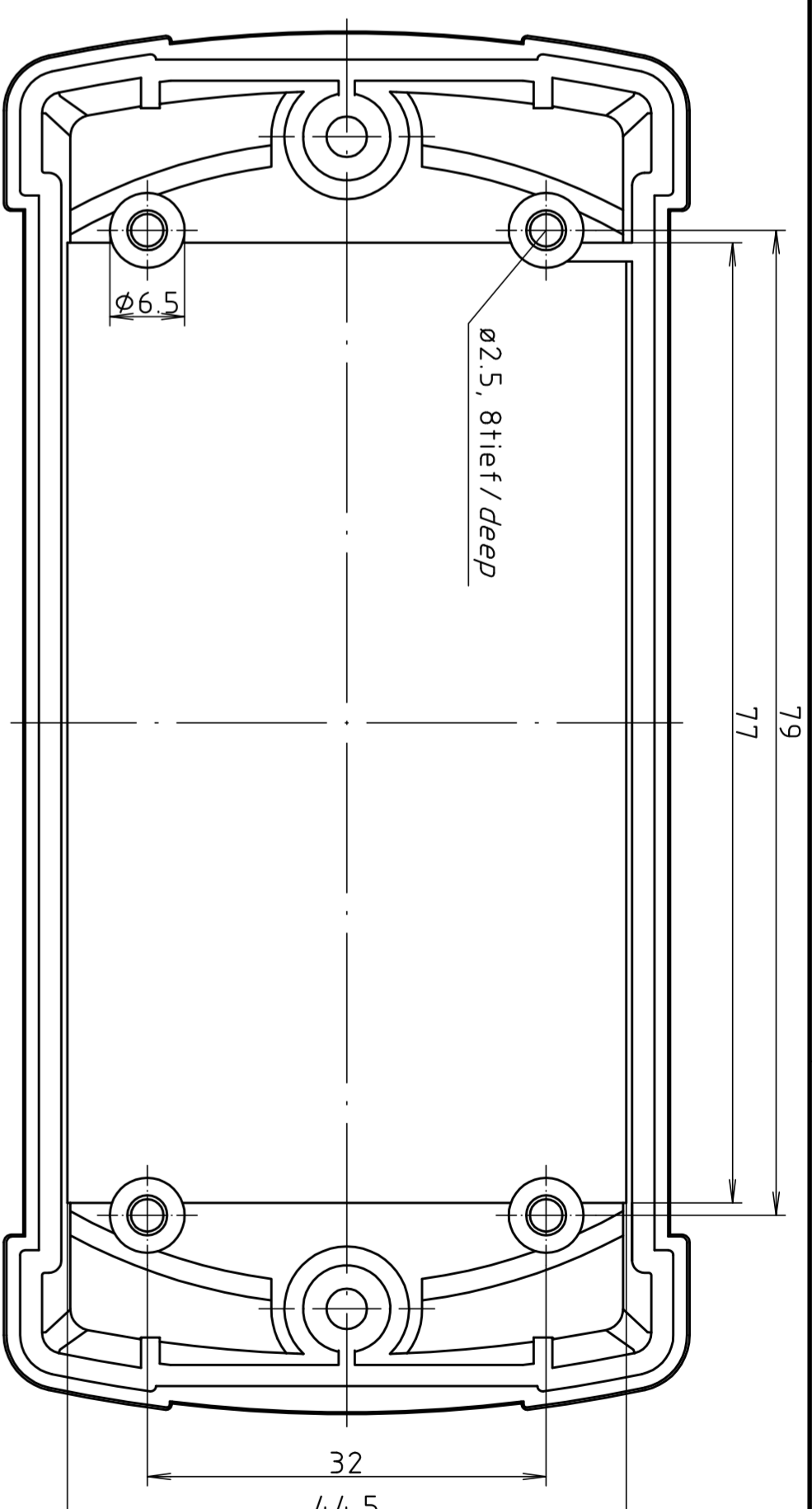
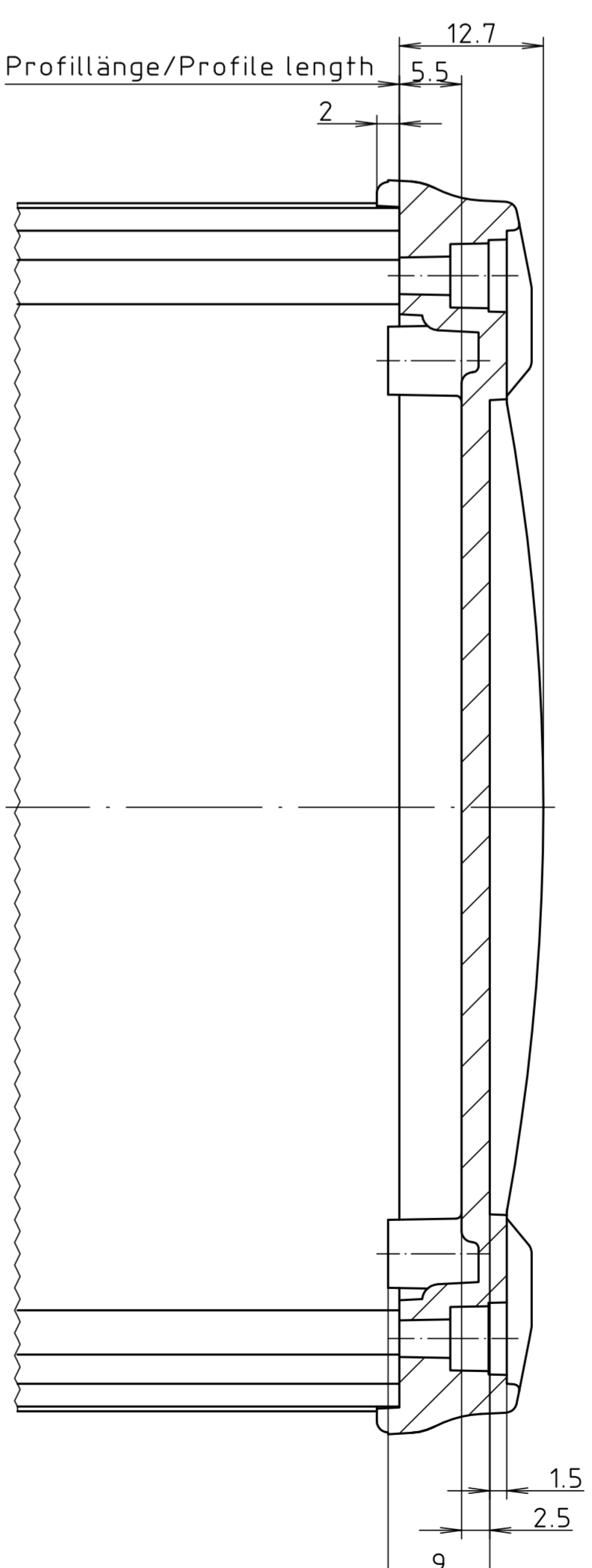


**ELPH-EU 1050**

Restliche Maße wie ELPH 1050  
Remaining dimensions see ELPH 1050



**ELD(W) 1050**



**ELDW 1050**

Maßstab/ Scale	2:1 (1:1)
Zeichnungs-Nr. / Drawing-No.	1K 534.0.061.01
Artikel / Article:	BOS-Ecoline 1050
Katalogzeichnung/ Catalogue drawing	
A.Nr. / Datum / Alt.-Nr. / Dnr.	2.802.507
DISK	23.07.2004_HR