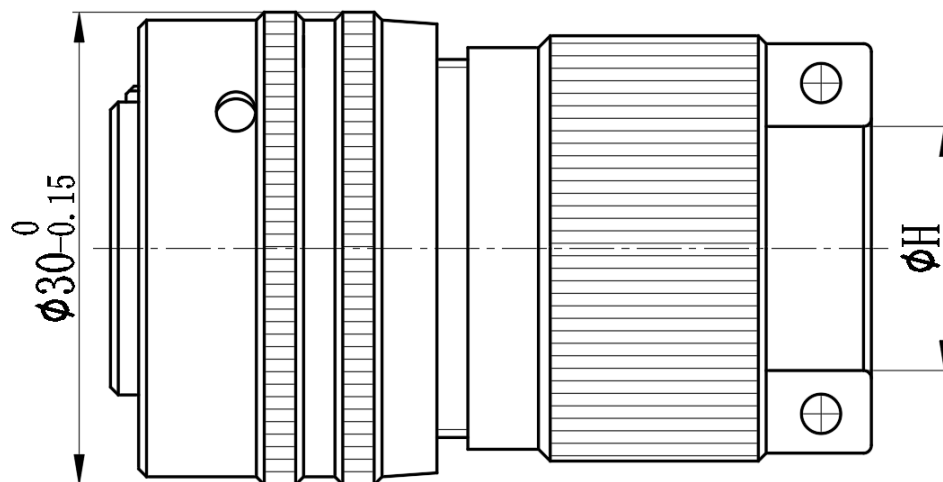
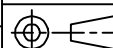


| | | |
|------|-----------|-------------|
| REV. | ECN. NO. | APPD. |
| A | WL-21-006 | Jerry zhang |



Technical Specifications

Operating temperature: $-55^{\circ}\text{C} - +125^{\circ}\text{C}$
 Relative humidity: 90%-95% at $40^{\circ}\text{C} \pm 2^{\circ}\text{C}$
 Operating pressure: 4.39 kPa - 101.33 kPa
 Vibration: frequency 10-2000 Hz, acceleration 196 m/s^2
 Shock: acceleration 980 m/s^2
 Mechanical life: ≥ 500 mating cycles
 Housing material: High-strength aluminum alloy
 Contact parts: $\phi 114, \phi 1.51$
 Contact resistance: $\phi 1 \leq 5 \text{ m}\Omega, \phi 1.5 \leq 3 \text{ m}\Omega$
 Contact current: $\phi 1 - 5\text{A}, \phi 1.5 - 10\text{A}$
 Gas tightness: not greater than $4.6 * 10^2 \text{ Pa}\cdot\text{cm/s}^2$
 Dielectric strength: 1500V at normal temperature

| | | | | | | | | | | |
|-----------|-------|-------------|---|--|-------|-------|------|-----|-----|---|
| x.± | x.± | UNITS mm | NAME(INTENDED USE) 15-pin needle-type plug | CLASS: <input type="checkbox"/> CONFIDENTIAL <input type="checkbox"/> SECRET <input checked="" type="checkbox"/> GENERAL | | | | | | |
| .x± 0.8 | .x± | MAT'L | PART NO.(INTENDED USE) WLES25-9501 | | | | | | | |
| .xx± 0.50 | .xx± | SEE NOTES | APPD: Yuan. wu 03/14'21 | TITLE: CONN DRAWING | | | | | | |
| .xxx± | .xxx± | FINISH | Q'TY | DWG NO.: WLES25-9501-0373 | | | | | | |
| | | | CHKD: Lei. wang 03/15'21 |  <table border="1"> <tr> <td>SCALE</td> <td>SHEET</td> <td>REV.</td> </tr> <tr> <td>N/A</td> <td>1/1</td> <td>A</td> </tr> </table> | SCALE | SHEET | REV. | N/A | 1/1 | A |
| SCALE | SHEET | REV. | | | | | | | | |
| N/A | 1/1 | A | | | | | | | | |
| | | | DRAW: Min. sun 03/16'21 | | | | | | | |

IDEAS GENERATED DRAWING. DON'T CHANGE BY HAND.