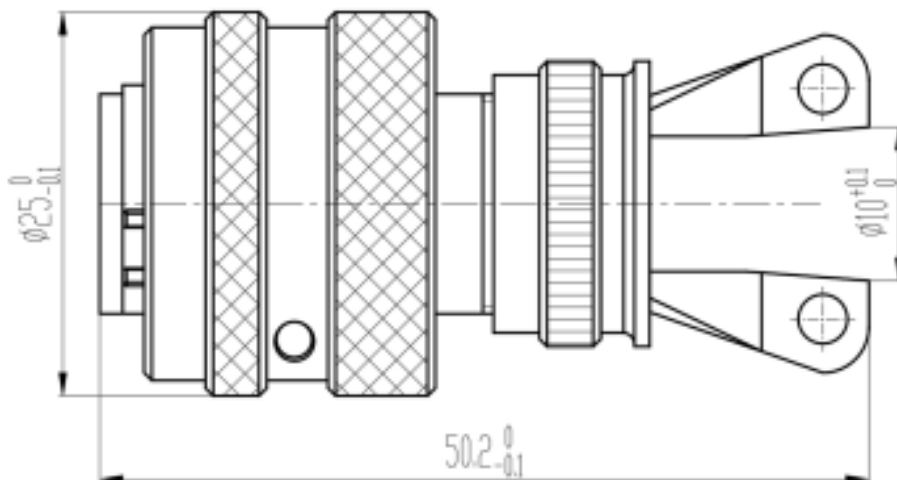


REV.	ECN. NO.	APPD.
A	WL-21-006	Jerry zhang



### Technical Specifications

Operating temperature:  $-65^{\circ}\text{C} - +200^{\circ}\text{C}$   
 Relative humidity: 98% at  $40^{\circ}\text{C} \pm 2^{\circ}\text{C}$   
 Vibration: frequency 10-2000 Hz, acceleration  $294 \text{ m/s}^2$   
 Shock: 3ms half-sine wave, acceleration 300g  
 Mechanical life: 500 cycles  
 Housing material: Stainless steel  
 Contact parts: 7\*20#, crimped  
 Contact resistance: 20#  $\leq 5 \text{ m}\Omega$   
 Contact current: 20# — 7.5A  
 Dielectric strength: 1800V at normal temperature

x.±	x.±	UNITS	mm	NAME(INTENDED USE)	CLASS: <input type="checkbox"/> CONFIDENTIAL <input type="checkbox"/> SECRET <input checked="" type="checkbox"/> GENERAL						
.x± 0.8	.x±	MAT'L		7-pin hole-type plug (crimp type)							
.xx± 0.50	.xx±	SEE NOTES		PART NO.(INTENDED USE)	TITLE: CONN DRAWING						
.xxx±	.xxx±	FINISH		WLES25-9501	DWG NO.: WLES25-9501-0369						
		Q'TY		APPD: Yuan. wu 03/14'21	<table border="1"> <tr> <td>SCALE</td> <td>SHEET</td> <td>REV.</td> </tr> <tr> <td>N/A</td> <td>1/1</td> <td>A</td> </tr> </table>	SCALE	SHEET	REV.	N/A	1/1	A
SCALE	SHEET	REV.									
N/A	1/1	A									
				CHKD: Lei. wang 03/15'21							
				DRAW: Min. sun 03/16'21							

IDEAS GENERATED DRAWING. DON'T CHANGE BY HAND.