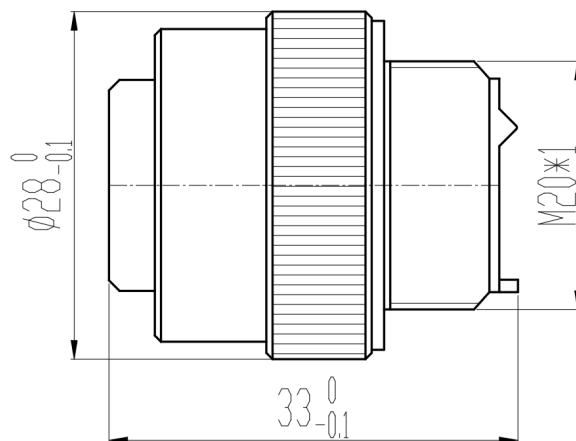


REV.	ECN. NO.	APPD.
A	WL-21-006	Jerry zhang



### Technical Specifications

Operating temperature:  $-55^{\circ}\text{C} - +200^{\circ}\text{C}$   
 Relative humidity:  $95\%$  at  $60^{\circ}\text{C} \pm 2^{\circ}\text{C}$   
 Operating pressure:  $4.39 \text{ kPa} - 101.33 \text{ kPa}$   
 Vibration: frequency  $10\text{-}2000 \text{ Hz}$ , acceleration  $196 \text{ m/s}^2$   
 Shock: acceleration  $980 \text{ m/s}^2$   
 Mechanical life:  $\geq 1000$  mating cycles  
 Housing material: Stainless steel  
 Contact part:  $\phi 1 \times 11$   
 Contact resistance:  $\phi 1 \leq 5 \text{ m}\Omega$   
 Contact current:  $\phi 1 - 5\text{A}$   
 Sealing performance: no more than  $4.6 \times 10^2 \text{ Pa}\cdot\text{cm/s}^2$   
 Dielectric strength:  $1500\text{V}$  at normal temperature

x.±	x.±	UNITS mm	NAME(INTENDED USE) 11-pin hole-type plug	CLASS: <input type="checkbox"/> CONFIDENTIAL <input type="checkbox"/> SECRET <input checked="" type="checkbox"/> GENERAL						
.x± 0.8	.x±	MAT'L	PART NO.(INTENDED USE) WLES25-9501							
.xx± 0.50	.xx±	SEE NOTES	APPD: Yuan. wu 03/14'21	TITLE: CONN DRAWING						
.xxx±	.xxx±	FINISH	CHKD: Lei. wang 03/15'21	DWG NO.: WLES25-9501-0381						
		Q'TY	DRAW: Min. sun 03/16'21	<table border="1"> <tr> <td>SCALE</td> <td>SHEET</td> <td>REV.</td> </tr> <tr> <td>N/A</td> <td>1/1</td> <td>A</td> </tr> </table>	SCALE	SHEET	REV.	N/A	1/1	A
SCALE	SHEET	REV.								
N/A	1/1	A								

IDEAS GENERATED DRAWING. DON'T CHANGE BY HAND.