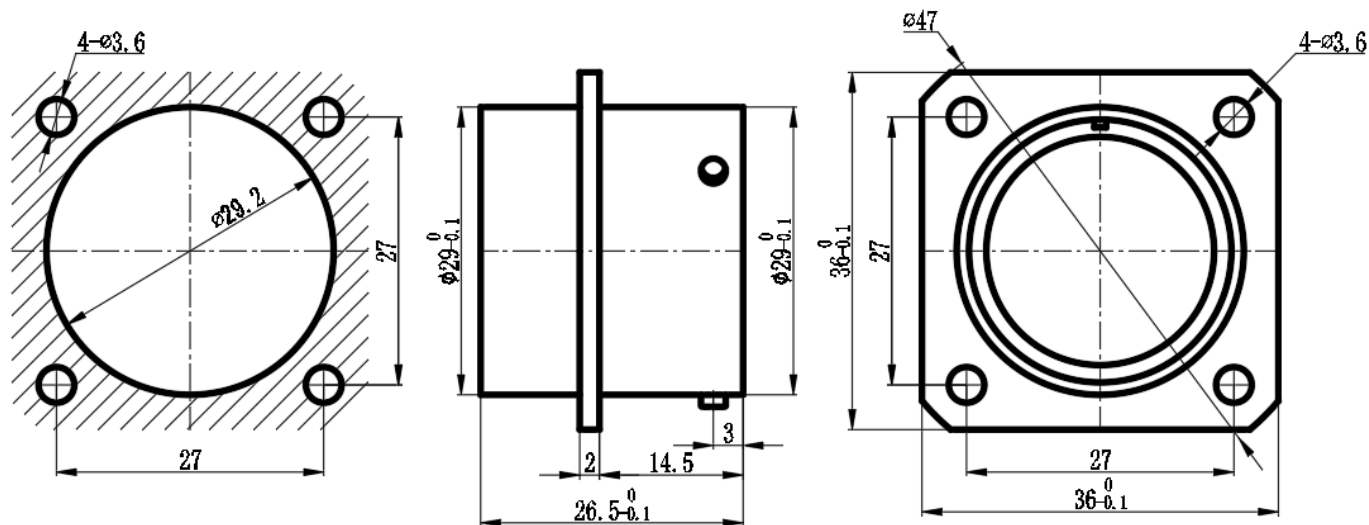


REV.	ECN. NO.	APPD.
A	WL-21-006	Jerry zhang



### Technical Specifications

Operating temperature: -55°C - +125°C  
 Relative humidity: 90%-95% at 40°C ±2°C  
 Operating pressure: 101.3 kPa - 1.33 Pa  
 Vibration: frequency 10-2000 Hz, acceleration 196 m/s<sup>2</sup>  
 Shock: acceleration 980.7 m/s<sup>2</sup>  
 Mechanical life: 500 cycles  
 Housing material: High-strength aluminum alloy  
 Contact parts: φ2.5 \* 8  
 Contact resistance: φ2.5 ≤ 1.5 mΩ  
 Contact current: φ2.5 — 25A  
 Gas tightness: not greater than 4.6 \* 10<sup>2</sup> Pa·cm/s<sup>2</sup>  
 Dielectric strength: 1500V at normal temperature

x.±	x.±	UNITS mm	NAME(INTENDED USE) 8-pin needle-type socket	CLASS: <input type="checkbox"/> CONFIDENTIAL <input type="checkbox"/> SECRET <input checked="" type="checkbox"/> GENERAL						
.x± 0.8	.x'±	MAT'L	PART NO.(INTENDED USE) WLES25-9501							
.xx± 0.50	.xx'±	SEE NOTES	APPD: Yuan. wu 03/14*21	TITLE: CONN DRAWING						
.xxx±	.xxx'±	FINISH	CHKD: Lei. wang 03/15*21	DWG NO.: WLES25-9501-0376						
		Q'TY	DRAW: Min. sun 03/16*21	<table border="1"> <tr> <td>SCALE</td> <td>SHEET</td> <td>REV.</td> </tr> <tr> <td>N/A</td> <td>1/1</td> <td>A</td> </tr> </table>	SCALE	SHEET	REV.	N/A	1/1	A
SCALE	SHEET	REV.								
N/A	1/1	A								

IDEAS GENERATED DRAWING. DON'T CHANGE BY HAND.