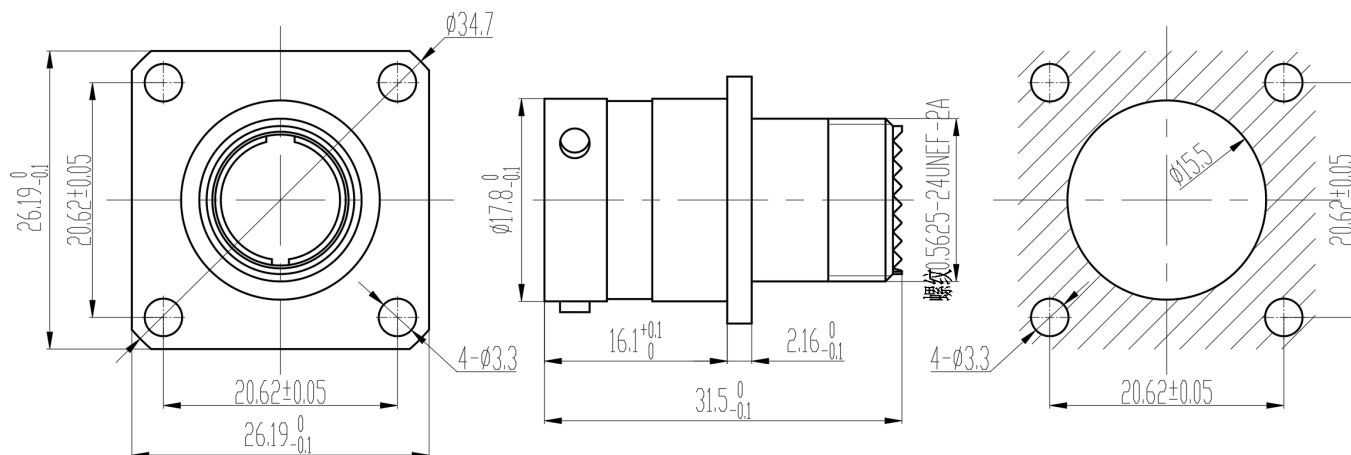


REV.	ECN. NO.	APPD.
A	WL-21-006	Jerry zhang



Technical Specifications

Operating temperature: -65°C - +200°C
 Relative humidity: 98% at 40°C ±2°C
 Vibration: frequency 10-2000 Hz, acceleration 294 m/s²
 Shock: 3ms half-sine wave, acceleration 300g
 Mechanical life: 500 cycles
 Housing material: Stainless steel
 Contact parts: 7*20#, crimped
 Contact resistance: 20# ≤ 5 mΩ
 Contact current: 20# — 7.5A
 Dielectric strength: 1800V at normal temperature

x.±	x.±	UNITS	NAME(INTENDED USE)	CLASS: <input type="checkbox"/> CONFIDENTIAL <input type="checkbox"/> SECRET <input checked="" type="checkbox"/> GENERAL						
.x± 0.8	.x±	mm	7-pin needle-type socket (crimp type)							
.xx± 0.50	.xx±	MAT'L	PART NO.(INTENDED USE)	TITLE: CONN DRAWING						
.xxx±	.xxx±	SEE NOTES	WLES25-9501	DWG NO.: WLES25-9501-0370						
		FINISH	APPD: Yuan. wu 03/14'21	<table border="1"> <tr> <td>SCALE</td> <td>SHEET</td> <td>REV.</td> </tr> <tr> <td>N/A</td> <td>1/1</td> <td>A</td> </tr> </table>	SCALE	SHEET	REV.	N/A	1/1	A
SCALE	SHEET	REV.								
N/A	1/1	A								
		Q'TY	CHKD: Lei. wang 03/15'21							
			DRAW: Min. sun 03/16'21							

IDEAS GENERATED DRAWING. DON'T CHANGE BY HAND.