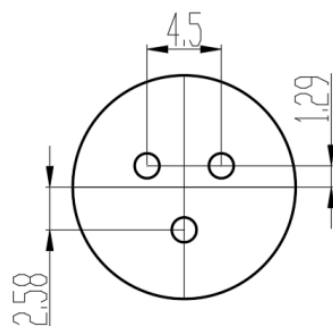
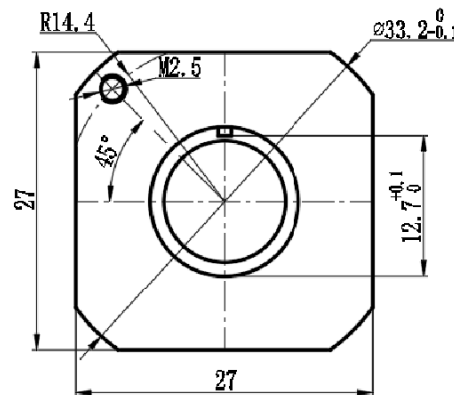
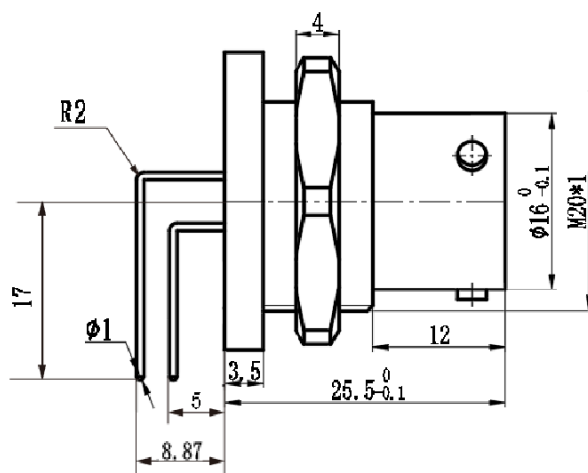
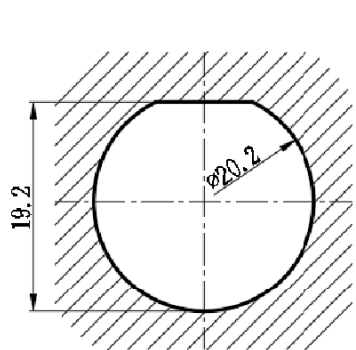


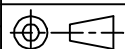
REV.	ECN. NO.	APPD.
A	WL-21-006	Jerry zhang



Technical Specifications

Operating temperature: -55°C - +125°C
 Relative humidity: 90%-95% at 40°C ±2°C
 Operating pressure: 101.3 kPa - 1.33 Pa
 Vibration: frequency 10-2000 Hz, acceleration 196 m/s²
 Shock: acceleration 980.7 m/s²
 Mechanical life: 500 cycles
 Housing material: Aluminum housing
 Contact parts: φ1.5 * 3
 Contact resistance: φ1.5 ≤ 3 mΩ
 Contact current: φ1.5 — 10A
 Gas tightness: not greater than 4.6 * 10² Pa·cm/s²
 Dielectric strength: 1500V at normal temperature

IDEAS GENERATED DRAWING. DON'T CHANGE BY HAND.

x.±	x.±	UNITS	mm	NAME(INTENDED USE)	CLASS: <input type="checkbox"/> CONFIDENTIAL <input type="checkbox"/> SECRET <input checked="" type="checkbox"/> GENERAL						
.x± 0.8	.x'±	MAT'L		3-pin needle-type socket (nut-locking)							
.xx± 0.50	.xx'±	SEE NOTES		PART NO.(INTENDED USE)	TITLE: CONN DRAWING						
.xxx±	.xxx'±	FINISH		WLES25-9501	DWG NO.: WLES25-9501-0241						
		Q'TY		APPD: Yuan. wu 03/14'21	 <table border="1"> <tr> <th>SCALE</th> <th>SHEET</th> <th>REV.</th> </tr> <tr> <td>N/A</td> <td>1/1</td> <td>A</td> </tr> </table>	SCALE	SHEET	REV.	N/A	1/1	A
SCALE	SHEET	REV.									
N/A	1/1	A									
				CHKD: Lei. wang 03/15'21							
				DRAW: Min. sun 03/16'21							