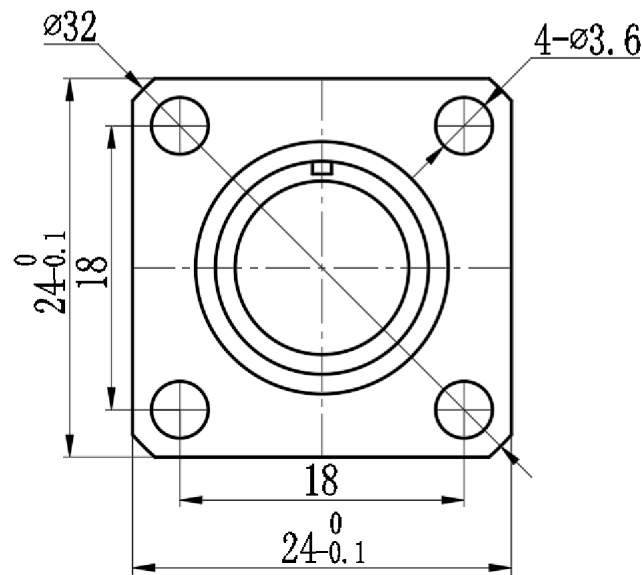
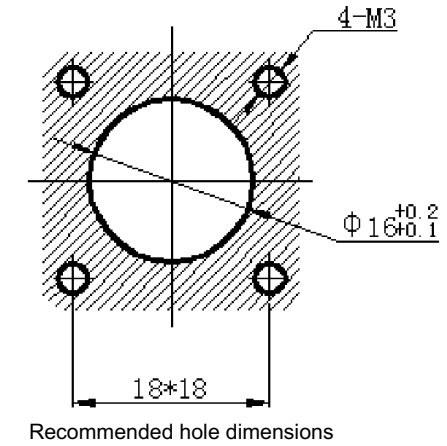
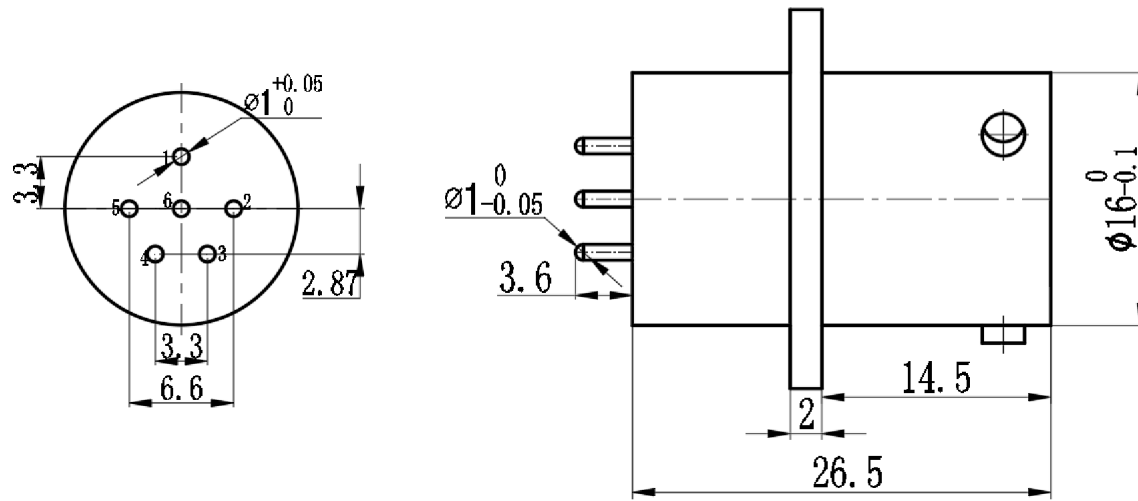


REV.	ECN. NO.	APPD.
A	WL-21-006	Jerry zhang



Technical Specifications

Operating temperature: -55°C - +125°C
 Relative humidity: 90%-95% at 40°C ±2°C
 Operating pressure: 101.3 kPa - 1.33 Pa
 Vibration: frequency 10-2000 Hz, acceleration 196 m/s²
 Shock: acceleration 980.7 m/s²
 Mechanical life: 500 cycles
 Housing material: High-strength aluminum alloy
 Contact parts: $\phi 1 * 6$
 Contact resistance: $\phi 1 \leq 5 \text{ m}\Omega$
 Contact current: $\phi 1 - 5\text{A}$
 Gas tightness: not greater than $4.6 * 10^2 \text{ Pa}\cdot\text{cm/s}^2$
 Dielectric strength: 1500V at normal temperature

x.±	x.±	UNITS	NAME(INTENDED USE)	CLASS: <input type="checkbox"/> CONFIDENTIAL <input type="checkbox"/> SECRET <input checked="" type="checkbox"/> GENERAL						
.x± 0.8	.x±	mm	6-pin needle-type socket							
.xx± 0.50	.xx±	MAT'L	PART NO.(INTENDED USE)	TITLE: CONN DRAWING						
.xxx±	.xxx±	SEE NOTES	WL25-9501	DWG NO.: WLES25-9501-0177						
		FINISH	APPD: Yuan. wu 03/14'21	<table border="1"> <tr> <td>SCALE</td> <td>SHEET</td> <td>REV.</td> </tr> <tr> <td>N/A</td> <td>1/1</td> <td>A</td> </tr> </table>	SCALE	SHEET	REV.	N/A	1/1	A
SCALE	SHEET	REV.								
N/A	1/1	A								
		Q'TY	CHKD: Lei. wang 03/15'21							
			DRAW: Min. sun 03/16'21							

IDEAS GENERATED DRAWING. DON'T CHANGE BY HAND.